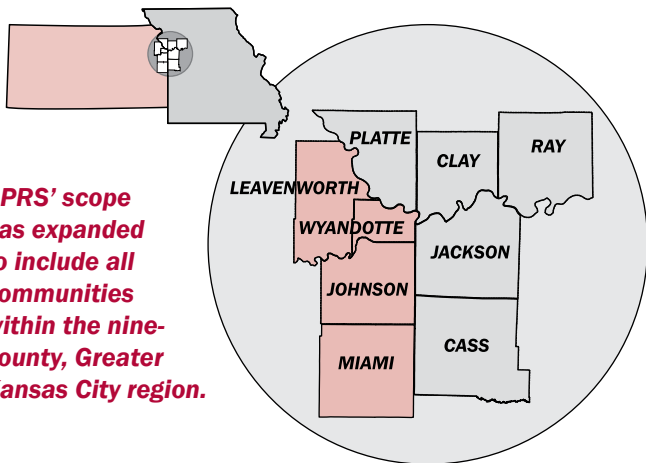


# APRS

**Asset Protection and Response System**

The **Asset Protection and Response System (APRS)**, originally known as the Critical Incident Site Management (CISM) program, was created to develop a pre-planned, rapid, law enforcement response to school violence situations.

After the terrorist attacks of Sept. 11, 2001, local officials realized that the methods used to collect data and information for schools could easily be adapted to pre-plan emergency responses for other critical sites and potential terrorist targets within the Greater Kansas City region.

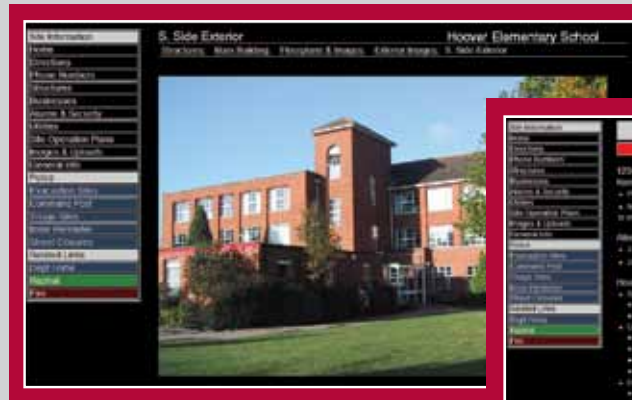


**APRS' scope has expanded to include all communities within the nine-county, Greater Kansas City region.**

While the fundamental building blocks of the original program still exist, new programming features have been developed and added over the years.

In addition to collecting data, APRS also conducts threat and vulnerability assessments of each site. Analysis components, report production functions and additional information categories have been incorporated to accurately collect and export information commonly requested for the Department of Homeland Security's "data calls" of Critical Infrastructure and Key Resources.

**The APRS database stores maps, contact information and other data for critical sites in the community. First responders can access this crucial information during an incident using a secure log-in system.**



## Participating in the APRS Program

Communities within the nine-county MARC region are eligible to participate in APRS at no cost. To ensure sustainability of the APRS program, a "Train-the-Trainer" procedure has been developed.

Designated members of participating public safety agencies receive instructions on the collection of required data, completion of threat and vulnerability assessments, the use of GIS mapping when available, and other components of the APRS process. Once the data has been collected, trainees are instructed in all required procedures for proper data input into the existing database using a secure log-in system.

Participating law enforcement agencies are responsible for identifying and prioritizing CI/KR sites within their jurisdictions for entry into the APRS system.

The data is stored on a dedicated, secure server is currently housed at the KCPD. The department has agreed to provide technical support and maintenance to sustain the regional program beyond existing UASI grant funds.

# Every community has critical infrastructure.

Regardless of size or population, all communities have buildings, businesses and resources that are critical to our daily activities — things like hospitals, schools, banks, bridges, power plants and government offices. Disruption of services or the destruction of property at critical sites would have an immediate impact on the community.



APRS, the Asset Protection and Response System, helps public safety agencies pre-plan their emergency response, using an “all-hazards” approach. APRS can also help these agencies mitigate the potentially devastating affects of an incident by assessing threats and vulnerabilities before an incident occurs.

In Homeland Security Presidential Directive 7 and the National Infrastructure Protection Plan, officials identified 18 **Critical Infrastructure Sectors** and **Key Resources**, referred to as CI/KR. APRS works with local officials to identify and assess CI/KR assets throughout the Greater Kansas City region.

## CI/KR

### Critical Infrastructure/Key Resources

- Agriculture and Food
- Banking and Finance
- Chemical
- Commercial Facilities
- Dams
- Defense Industrial Base
- Emergency Services
- Energy
- Government Facilities
- Information Technology
- National Monuments and Icons
- Nuclear Reactors, Materials and Waste
- Postal and Shipping
- Public Health and Health Care
- Telecommunications
- Transportation
- Critical Manufacturing

For more information about the APRS program, please contact:

**Michael (Mike) Wilson**  
CI/KR Coordinator  
mwilson@marc.org  
www.kctew.org

Mid-America Regional Council  
Asset Protection and Response System

Kansas City Regional  
Terrorism Early Warning Group

c/o Mid-America Regional Council  
600 Broadway, Suite 200  
Kansas City, MO 64105  
816-474-4240



# APRS

**Asset Protection and Response System**



# APRS

**Asset Protection and Response System**

**A comprehensive,  
pre-planned emergency  
preparedness program  
for first responders**

Supported by the U.S. Department of Homeland Security's Urban Area Security Initiative program

Monitored and supervised  
by the Mid-America  
Regional Council  
and the Kansas City  
Regional Terrorism Early  
Warning (TEW) Center

